

Kaymar

Fitting Instructions



Vehicle **Ranger PX
Mazda BT50**
Year **Post 2012**
Type **Ute**
Part **Rear Bar**

Applicable to Part Numbers
K3920U, KITPXRU, KITPXRU-R-JCD, KITPXRU-L-JCD

Date published April 19, 2018

IMPORTANT - BEFORE COMMENCING INSTALLATION

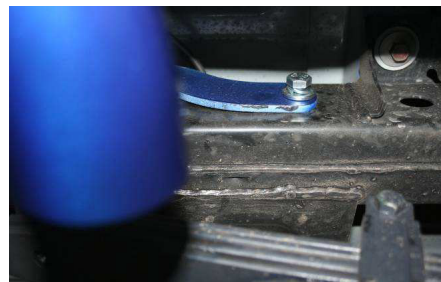
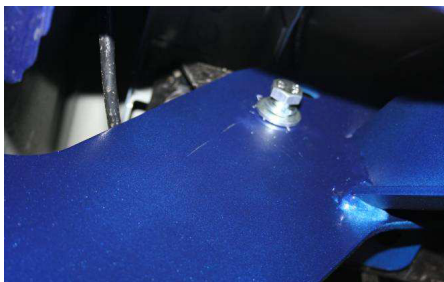
Please verify the part number corresponds with the list above.

Read through these instructions and check items in the supplied fitting kit matches the attached list.

Every effort is made to ensure instructions are as accurate as possible at the time of publishing however work should not be commenced until the document has been thoroughly read, measurements checked and all components in the package verified as complete. Kaymar has used reasonable care in preparing the information included in these documents, but makes no representations or warranties as to the completeness or accuracy of the information. Information is supplied upon the condition that the persons receiving the information will make their own determination as to its suitability for their purposes prior to use. Kaymar assumes no liability whatsoever for any damages incurred by you resulting from errors in or omissions from the information included herein. Kaymar reserves the right to make changes without further notice to any products to improve reliability, function or design.

FORD RANGER PX / MAZDA BT50

1. Remove rear bumper and towbar if fitted.
2. Run some masking tape along underside of tube on either side to protect paint work when bar is being fitted.
3. With another person lift the Kaymar bar onto vehicle being careful not to touch the paint work.
4. Fit 3 x either side, M12 x 1.75 x 35 bolt, spring and flat to captive nuts in chassis. **DO NOT TIGHTEN.**



Kaymar

Fitting Instructions

5. Fit 1 x bolt on wire on either side in through chassis and out through retainer hole in Kaymar bar using M12 flat, spring and nut. **DO NOT TIGHTEN.**



6. Fit bolt plate into chassis down through support gusset in Kaymar bar using M12 flat, spring and nut. **DO THESE BOLTS UP FIRST.**



7. Do up remaining bolts.
8. Fit wiring harness for LED lights - **NOTE: DO NOT splice the wiring into the trailer harness**
- (i) Unplug the left and right hand tail light plugs from under the vehicle. Plug the supplied wiring harness into the lights marked left and right.
 - (ii) Run the orange power wire along the top of the chassis to the engine bay and up to the battery. Cable tie the wire away from any hot or sharp surfaces.
 - (iii) Plug in the ECU to the wiring harness and secure in a dry safe location.
 - (iv) Connect the wiring to the LED lights following the table below.

| | | LED |
|-----------------|--------|--------|
| Left indicator | Yellow | Yellow |
| Right indicator | Green | Green |
| Stop | Red | Red |
| Tail | Brown | Brown |
| Reverse | Black | Black |
| Earth | White | White |

- (v) Connect the power to the positive terminal on the battery and check all lights are working correctly.

Kaymar

Fitting Instructions

9. Run a thin bead of silicon along underside of chequer plate curved edge. Place rubber strip along curved edge. Place another bead of silicon on rubber strip. Fit to bar using stainless steel hex head screws and M6 flange nuts.
10. If carriers or jerry can holder is to be fitted, see separate carrier fitting instructions
11. **If the vehicle is fitted with factory sensors these cannot be used with the steel Kaymar bar and should be, switched off at the dash board. The sensors must be then wrapped in foam sheet and secured up under the body. Refer to Kaymar sensor fitting instructions for more detail.**

BK3920 PX FORD RANGER / MAZDA BT50 REAR BAR

| QUANTITY | DESCRIPTION |
|----------|--|
| 6 | BOLT M12 X 35 X 1.75 |
| 2 | BOLT ON WIRE M12 X 30 X 1.75 150 MM WIRE |
| 2 | BOLTS ON PLATE - 2 X M12 X 40 X 1.75 |
| 12 | WASHER FLAT M12 X 30 HD |
| 12 | WASHER SPRING M12 |
| 6 | NUT M12 X 1.75 |



bolt_on_wire_M12x30x1.75_150mm_wire



bolts_on_plate_2x_M12x40x1.75

BK3920 PX FORD RANGER / MAZDA BT50 REAR BAR

| QUANTITY | DESCRIPTION |
|----------|--|
| 6 | BOLT M12 X 35 X 1.75 |
| 2 | BOLT ON WIRE M12 X 30 X 1.75 150 MM WIRE |
| 2 | BOLTS ON PLATE - 2 X M12 X 40 X 1.75 |
| 12 | WASHER FLAT M12 X 30 HD |
| 12 | WASHER SPRING M12 |
| 6 | NUT M12 X 1.75 |



bolt_on_wire_M12x30x1.75_150mm_wire



bolts_on_plate_2x_M12x40x1.75